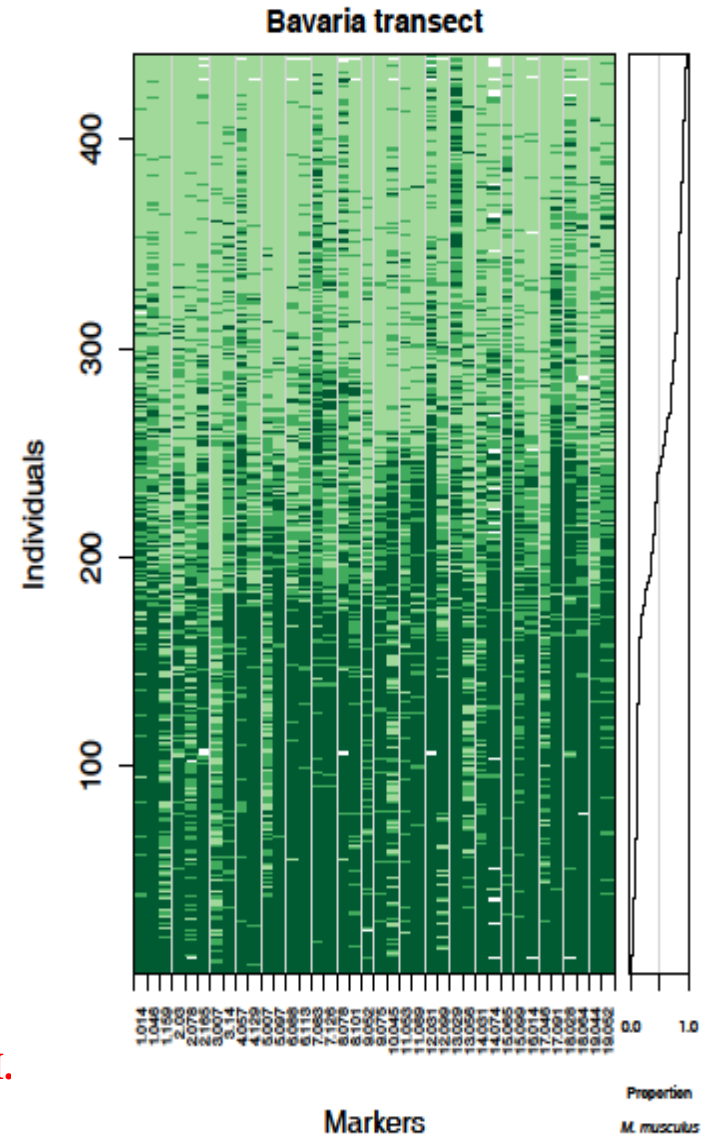
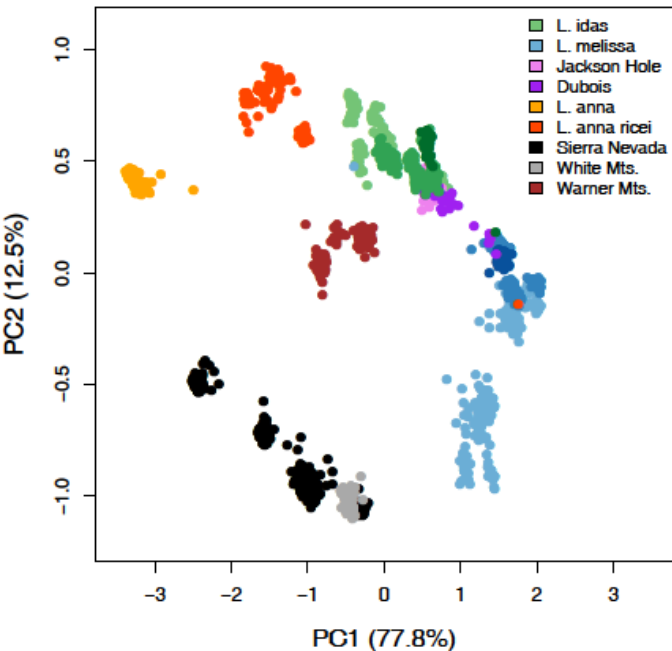


Alex Buerkle – University of Wyoming

The multifaceted and variable distribution of genetic variation near the species level



The evolutionary processes that give rise to species are responsible for the remarkable diversity we see among organisms. We expect the genomic consequences of evolution associated with speciation to be diverse. Nevertheless our recent studies of the distribution of variation between species, in hybrids, and among conspecific populations reveal some surprising and consequential complexity. I will discuss our recent studies of population genomic diversity in several plant and animal genera. I will suggest implications for our thinking about species and about the consequences of speciation for structuring biodiversity near the species level.

Friday, April 24, 2015; Room 307, SERF; 3:30 - 4:30PM.
Pre-talk reception: 3:00 PM in Dabney 568