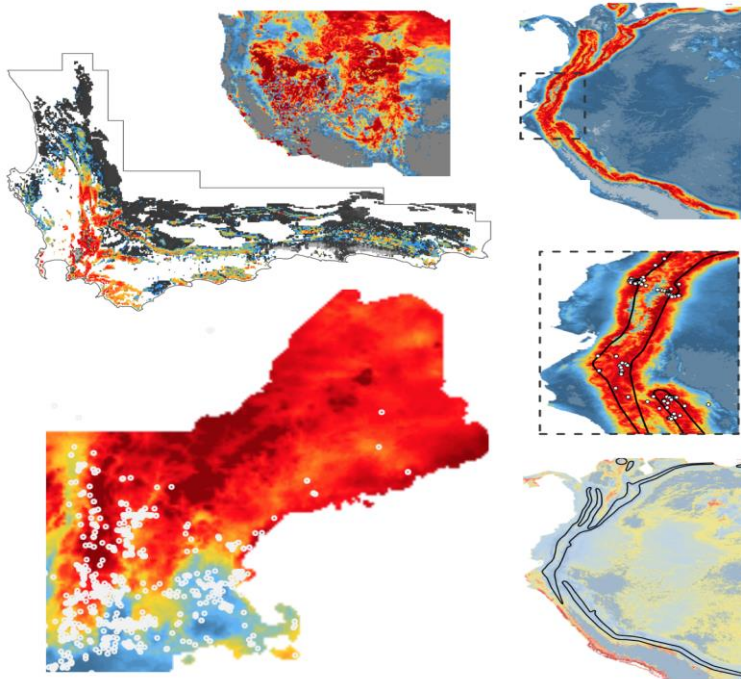


## Dr. Cory Merow- University of Connecticut

“Making the most of imperfect data: Inferring mechanism by linking regional forecasts to population and community dynamics in a changing world”

Forecasting ecological responses to dynamic, often non-analogue, environments will be key to mitigating global change. The societal demand for management strategies challenges ecologists to forecast systems lacking critical data. In this talk, I will provide an overview of my approach to making the best of imperfect data to develop mechanistic forecasts of population, community and ecosystem responses to climate change, disturbance, and nonnative species.



**RESEARCH TALK**  
**Monday February 29; Room 27,**  
**Alumni Memorial Bldg; 4:30- 5:30 PM.**